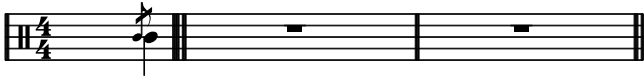


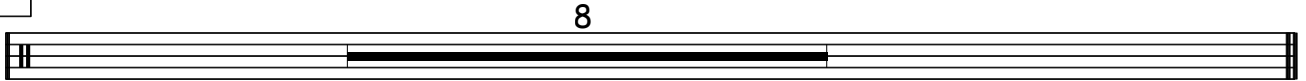
Summer of '69

Bryan Adams

Intro



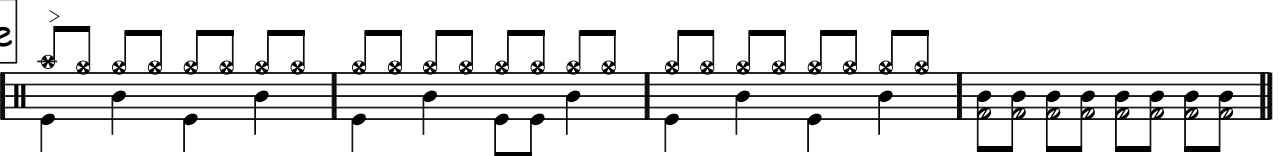
Couplet 1



Pre Chorus



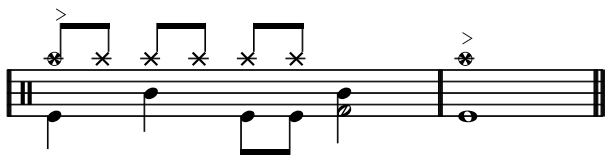
Interlude



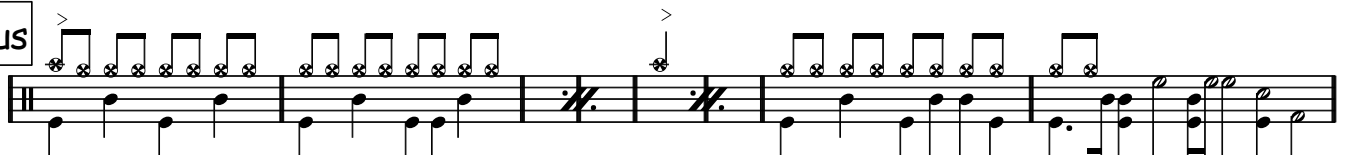
Couplet 2



Pre Chorus



Chorus



Bridge

Interlude

Couplet 3

Pre Chorus

Chorus

Gitaar solo

The first staff of music shows a guitar solo. It begins with a treble clef and a key signature of one sharp (F#). The melody consists of eighth notes, with some notes marked with an accent (>). The bass line consists of quarter notes. The staff ends with a double bar line.

The second staff continues the guitar solo. It features a similar melodic pattern with accents. The final measure of the staff is marked with a bracket and the word "Fill", indicating a short melodic flourish.

The third staff continues the guitar solo. It includes a measure with a fermata over a note. The text "fade out" is written below the staff, indicating the end of the solo.

The fourth staff continues the guitar solo. It features a similar melodic pattern with accents. The final measure of the staff is marked with a bracket and the word "Fill", indicating a short melodic flourish.

The fifth staff continues the guitar solo. It features a similar melodic pattern with accents. The staff ends with a double bar line.

The sixth staff continues the guitar solo. It features a similar melodic pattern with accents. The final measure of the staff is marked with a bracket and the word "Fill", indicating a short melodic flourish.