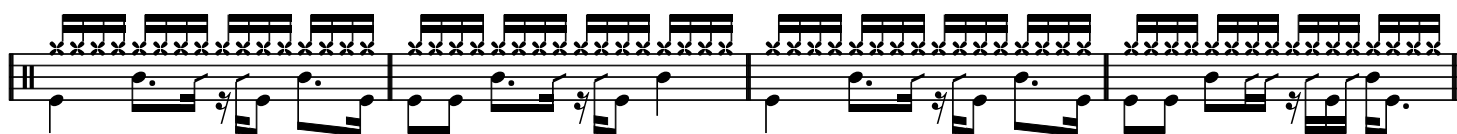
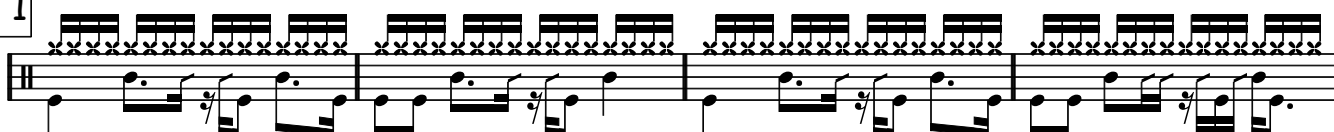


# Irreplaceable

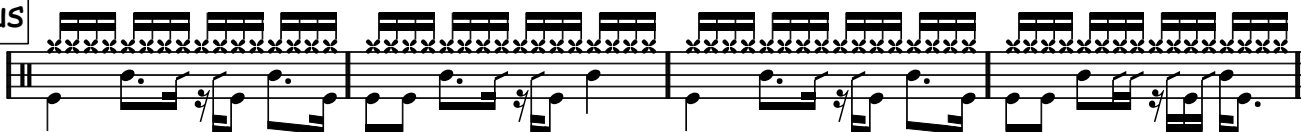
## Intro



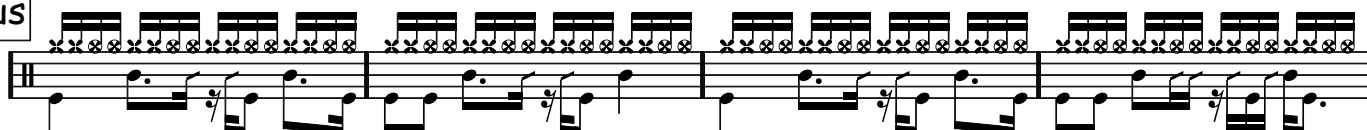
## Couplet 1



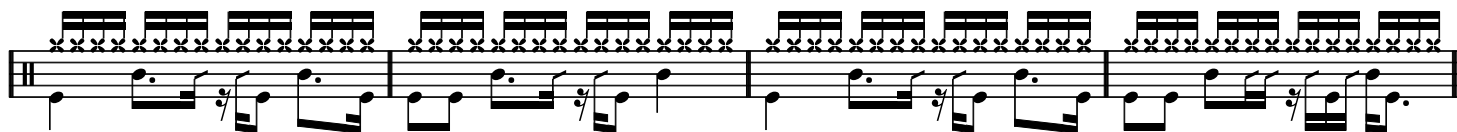
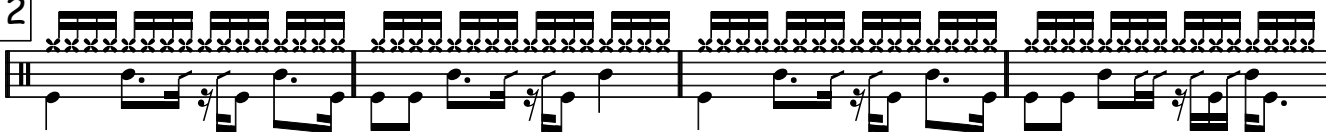
## Pre Chorus



## Chorus



## Couplet 2



Pre Chorus

Musical notation for the Pre Chorus section, featuring a single staff with a complex rhythmic pattern of eighth and sixteenth notes.

Chorus

Musical notation for the Chorus section, consisting of three staves with a complex rhythmic pattern of eighth and sixteenth notes.

Bridge

Musical notation for the Bridge section, consisting of two staves with a complex rhythmic pattern of eighth and sixteenth notes.

Interlude

Musical notation for the Interlude section, consisting of two staves with a simple rhythmic pattern of quarter and eighth notes.

Chorus

The first staff of the Chorus section features a complex rhythmic pattern. The upper part of the staff consists of a continuous stream of sixteenth notes, with a small 'x' symbol above each note. The lower part of the staff contains a melody of quarter and eighth notes, with a slash and a vertical line indicating a specific rhythmic pattern.

The second staff of the Chorus section continues the rhythmic pattern from the first staff, maintaining the same structure of sixteenth notes in the upper part and a melodic line in the lower part.

Chorus / Eind

The first staff of the Chorus / Eind section begins with the same rhythmic pattern as the previous section, but it concludes with a final cadence.

The second staff of the Chorus / Eind section continues the rhythmic pattern and concludes with a final cadence.

A single musical staff with a fermata symbol (a semi-circle with a vertical line) positioned above the staff, indicating a pause or hold.