

# Have A Nice Day

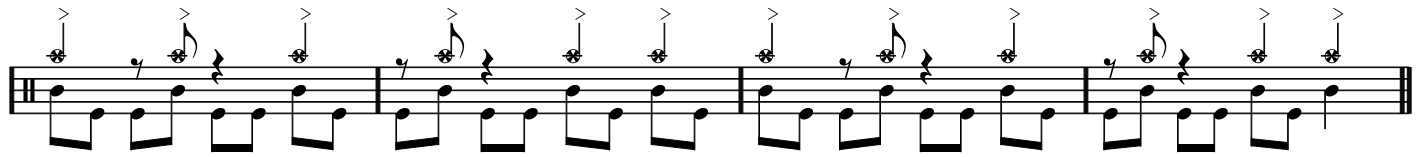
♩ = 130

Intro *Gitaar*

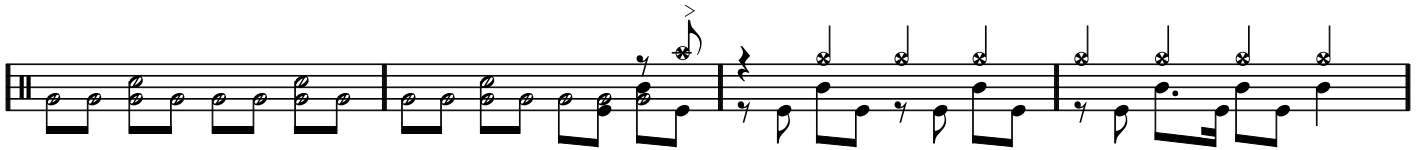
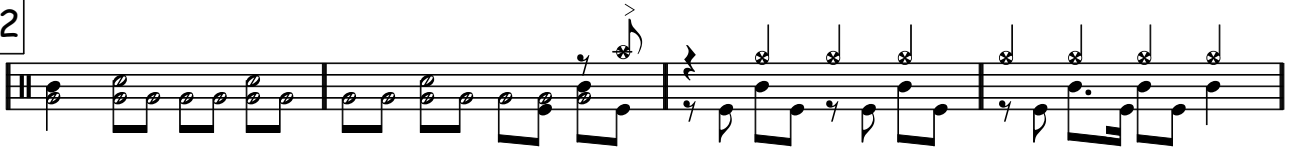
Couplet

Pre Chorus

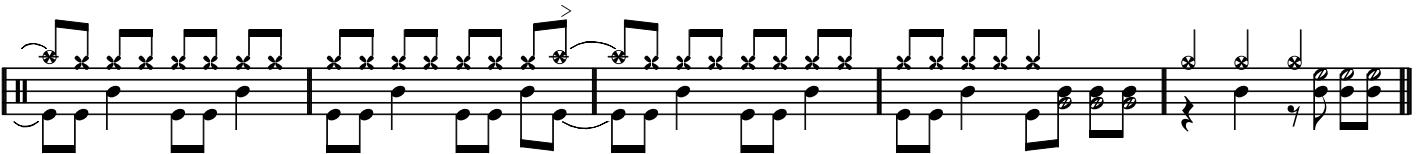
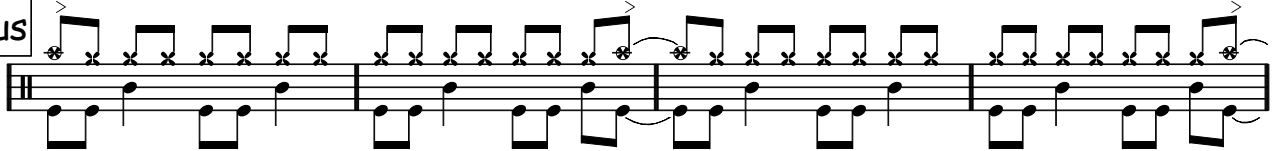
Chorus



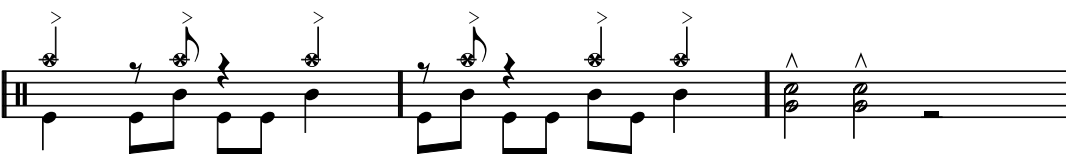
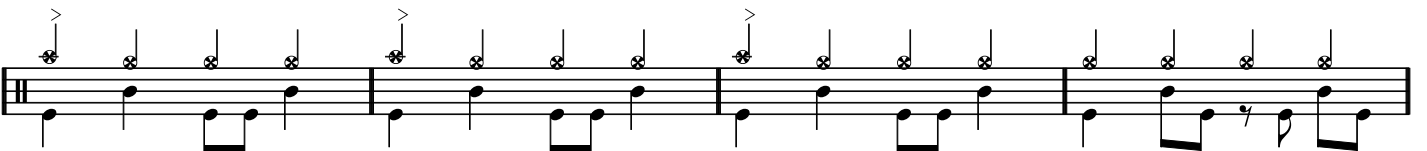
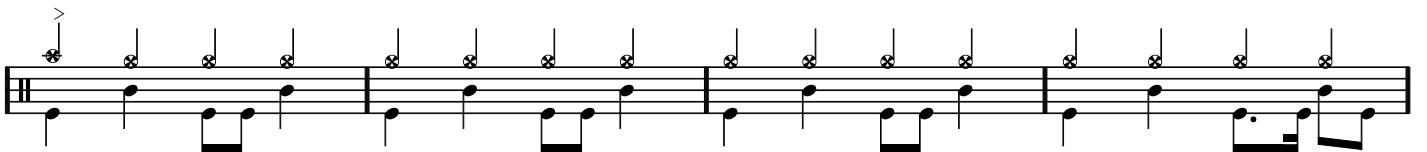
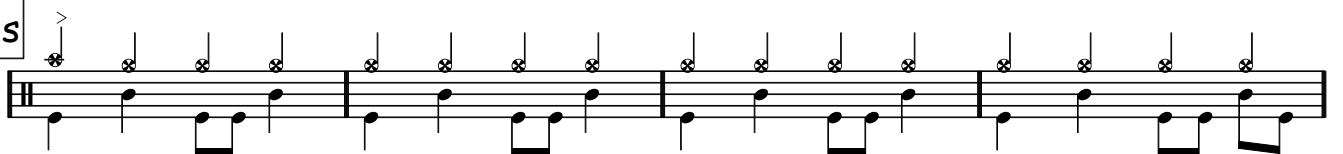
Couplet 2



Pre Chorus



Chorus



A musical staff in treble clef with a key signature of one flat. It contains a sequence of rhythmic patterns with accents (>) and asterisks (\*). The notes are primarily quarter and eighth notes, with some rests.

Gitaar Solo

A musical staff in treble clef with a key signature of one flat. It contains a sequence of rhythmic patterns with asterisks (\*). The notes are primarily quarter and eighth notes.

A musical staff in treble clef with a key signature of one flat. It contains a sequence of rhythmic patterns with accents (>) and asterisks (\*). The notes are primarily quarter and eighth notes.

A musical staff in treble clef with a key signature of one flat. It contains a sequence of rhythmic patterns with accents (>) and asterisks (\*). The notes are primarily quarter and eighth notes, ending with a double bar line.

Interlude (Gitaar)

A musical staff in treble clef with a key signature of one flat. It contains a sequence of rests followed by a few notes at the end, indicating a guitar interlude.

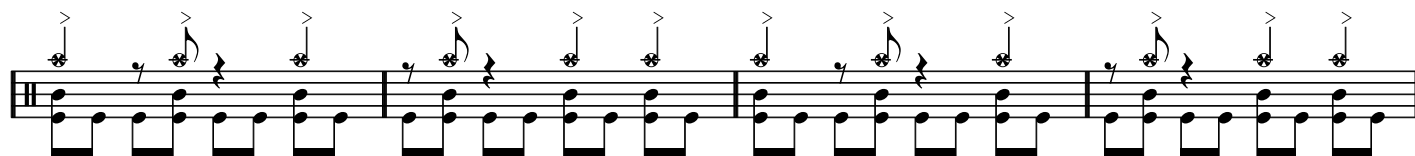
Chorus

A musical staff in treble clef with a key signature of one flat. It contains a sequence of rhythmic patterns with accents (>) and asterisks (\*). The notes are primarily quarter and eighth notes.

A musical staff in treble clef with a key signature of one flat. It contains a sequence of rhythmic patterns with accents (>) and asterisks (\*). The notes are primarily quarter and eighth notes.

A musical staff in treble clef with a key signature of one flat. It contains a sequence of rhythmic patterns with accents (>) and asterisks (\*). The notes are primarily quarter and eighth notes.

A musical staff in treble clef with a key signature of one flat. It contains a sequence of rhythmic patterns with accents (>) and asterisks (\*). The notes are primarily quarter and eighth notes, ending with a double bar line.



Eind

